

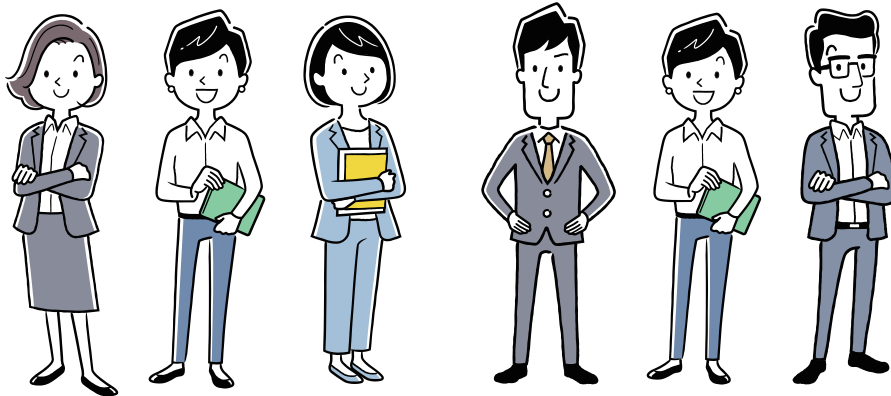


The University of Tsukuba

Early Completion Program of the Three-year Doctoral Program for Working People



The University of Tsukuba supports
highly-driven working people!



Obtain a **PhD** in a Minimum of One Year

The “Early Completion Program” is aimed at working people who have certain research achievements and abilities. The three-year doctoral program, which normally takes three years to complete, can be completed in as little as one year in this program. The University of Tsukuba supports highly-driven working people. In this program, students complete a doctoral dissertation based on their previous research achievements. Students will receive guidance from their academic advisor for the preparation of the dissertation.

In addition, the University of Tsukuba has adopted an “Achievement Assessment” system. Under this system, students are periodically evaluated on the items they need to achieve by the end of the three-year doctoral program. This is to ensure that students are able to confirm their own level of achievement. Along with this, the program is evaluated in the program review conducted by the Office of Management for Teaching and Learning to ensure the quality of the degree awarded.



■ To Register for the Early Completion Program

The “Early Completion Program” is aimed at working people who have certain research achievements and abilities. After passing the entrance examination, students are required to submit the documents set by the degree program or doctoral program to be reviewed for applicability to the Early Completion Program.

The documents required for review for applicability to the Early Completion Program are:

- Outline of applicant (CV, specialized area at the school last attended, relationship between current job and desired research area, etc.)
 - List of achievements (related to Early Completion Program Selection Requirements)
 - Self-evaluation of achievement
 - Plan of doctoral dissertation
- among others

Based on these documents, we will judge whether or not the applicant has “certain research achievements” . An interview may be given if necessary. Details of the selection method and required documents will be sent with the notification of passing the entrance examination.

If students fail the selection, they will be admitted to the regular three-year doctoral program and will need three years of study to complete the program. However, even in the case of regular enrollment, if the student is recognized as having made outstanding research achievements while enrolled in the program, the Early Completion System can be applied. In this case, it is possible to complete the program in less than three years (from one year and a few months to two years and a few months).

In the event that a student enrolled in the Early Completion Program is unable to complete the program in one year due to work commitments or other reasons, the student will be required to continue enrolling in the program to complete it. In this case, it is still possible to complete the program in less than three years. It is also possible to take a leave of absence for reasons such as current employment.

■ Eligible Applicants

This program is aimed at working people who have certain research achievements and abilities. Specifically, those who meet the “Early Completion Program Selection Requirements” set by each doctoral program are eligible to take the Early Completion Program admission review, which is held after passing the Graduate Entrance Examination.

Please refer to the following website or appendix for the Early Completion Program Selection Requirements set by each doctoral program.

Early Completion Program Selection Requirements

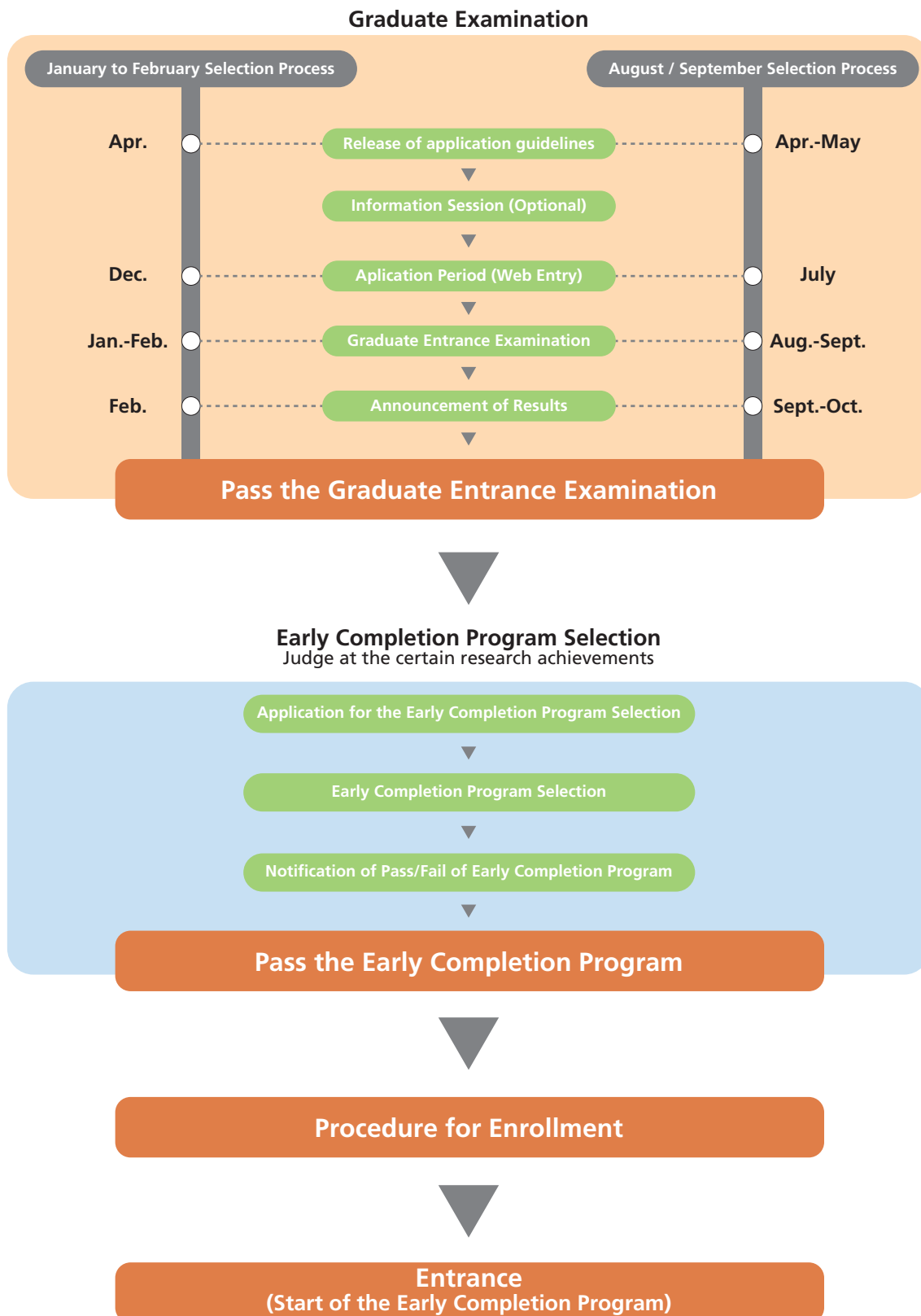
<https://www.souki.tsukuba.ac.jp/en/sinsa/>



How to Enroll

Students are eligible to be reviewed for this program after passing the Graduate Entrance Examination.

In the Case of April Admission



* Selection requirements, selection schedule, and period of procedure for enrollment vary for degree program or doctoral program.

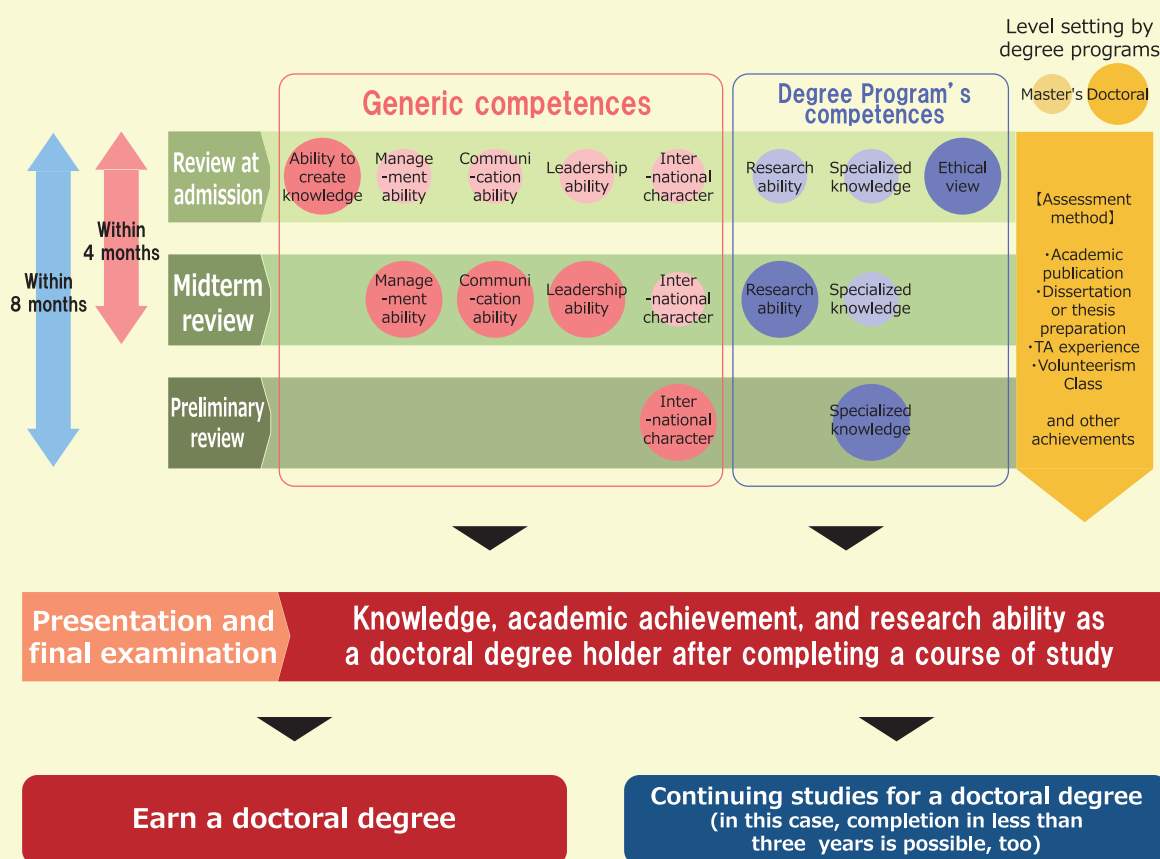
What is Achievement Assessment?

The University of Tsukuba regularly assesses student achievement based on the achievement assessment method set by each doctoral program. The purpose of this is to ensure that students acquire Generic Competences and Degree Program's Competences from the time they enter the university to the time they complete their program. In this way, we provide meticulous academic support.

In the Early Completion Program, students are judged to already have certain research achievements and abilities at the admission period, and the degree of achievement in each competence set by each doctoral program is confirmed. As a result, students can complete the program in a shorter period of time (minimum one year) than regular students.

In the case of one doctoral program, the student is assessed at various review stages, including admission, midterm review (within four months of admission), and preliminary review (within eight months of admission), to determine whether the student is at a level appropriate for the doctoral degree. This review will be conducted at least three times. This evaluation will be based on the student's self-assessment and evaluation by faculty members for each competence set by the doctoral program.

Example of a Basic Model for the Course Outline and Achievement Assessment (Established practice according to the assessment method set by the degree program)



Implementing Degree Programs

Tsukuba Campus

【Application Guidelines】 <https://eng.ap-graduate.tsukuba.ac.jp/>

Degree Program	Doctoral Program
Pure and Applied Sciences	Mathematics / Physics / Chemistry / Engineering Sciences (Subprogram in Applied Physics / Subprogram in Materials Science / Subprogram in Materials Science and Engineering)
Systems and Information Engineering	Policy and Planning Sciences / Risk and Resilience Engineering Computer Science / Intelligent and Mechanical Interaction Systems Engineering Mechanics and Energy
Life and Earth Sciences	Biology / Agricultural Sciences / Life and Agricultural Sciences Bioindustrial Sciences / Geosciences / Environmental Studies

Doctoral Program in Life Science Innovation

(Cross-disciplinary degree programs in which each course belongs to its own degree program)

Disease Mechanism (Degree Programs in Systems and Information Engineering)
 Drug Discovery (Degree Programs in Life and Earth Sciences)
 Food Innovation (Degree Programs in Life and Earth Sciences)
 Environmental Management (Degree Programs in Life and Earth Sciences)
 Bioinformatics (Degree Programs in Comprehensive Human Sciences)
 Biomolecular Engineering (Degree Programs in Comprehensive Human Sciences)

Tokyo Campus (Bunkyo School Building)

【Application Guidelines】 <https://www.office.otsuka.tsukuba.ac.jp/examinee/>

Degree Program	Doctoral Program
Business Sciences	Law / Business Administration

Features of Educational and Research Supervision

We offer students the Dual Campus of Tsukuba Campus and Tokyo Campus by using communication systems including e-learning, video conferencing systems in group supervision such as seminars, and communication tools in individualized supervision between academic advisors and students.

Number of students enrolled and completed the program (AY2024)

Degree Programs	Business	Pure and Applied	Systems and Information	Life and Earth	Comprehensive Human	Total
Enrolled	2	5 (1)	17 (6)	11	0	35 (7)
Completed	1	5	11	10	1	28

※The number of students who enrolled in October is shown in parentheses.

FAQ

[Q1] What is the difference between a three-year doctoral program and a doctoral program? Can I earn a doctoral degree in a master's program?

[A] A graduate school typically includes master's programs and doctoral programs. A student who completed a master's program can be enrolled in a doctoral program. Since the Early Completion Program of the Three-Year Doctoral Program in the University of Tsukuba is a doctoral program, it only accepts students who completed a master's program. You cannot earn a doctoral degree in a master's program.

[Q2] If I register for the Early Completion Program, how often should I visit the Tsukuba Campus?

[A] It will be enough for you to go to the Tsukuba Campus about once a week. Discuss details with your prospective academic advisor.

However, for the Degree Programs in Business Sciences, direct contact with the prospective academic advisor is not available so consult the Academic Service Office for the Business Sciences.

[Q3] I am worried that a doctoral degree earned in one year will be evaluated as poor in quality.

[A] The degree awarded by the Early Completion Program is equivalent to a degree awarded by regular doctoral programs.

Our university periodically verifies the achievement of the level appropriate for a doctoral degree in the "Achievement Evaluation" to evaluate each student and the doctoral program itself ensures the quality of the doctoral degree and social evaluation by undergoing an evaluation in the program review administered by the Office of Management for Teaching and Learning. It is regarded to have earned a reputation of equal or superior quality (level).

[Q4] Can I apply for the program even if I don't have a master's degree or if I completed a program equivalent to a master's in a year?

[A] If you do not have a master's degree, please take the eligibility screening of the degree program before applying. If you are confirmed to have the abilities equivalent to a master's or specialized degree holder by the screening, you can apply for the entrance examination as a master's holder. When you pass the examination, you will be eligible to apply for the Program.

Please note that we cannot accept you as a student of the Program in case you completed your master's program in a year.

For other questions, please refer to the Early Completion Program Website

Frequently Asked Questions

<https://www.souki.tsukuba.ac.jp/en/questions/>



Admission Fee and Tuition (as of AY2025)

Examination Fee: 30,000yen

Admission Fee: 282,000yen (Payment with payment receipt at the time of enrollment procedure)

Tuition (Student Fees): 535,800 yen (per year)

Note: If the price is revised, the new payment amount will be applied from the time of revision.

Contact

Inquiries on the Early Completion Program system

Division of Educational Reform Support

Department of Educational Promotion

☎ 029-853-7631

✉ souki@un.tsukuba.ac.jp

HOURS Weekdays : 9:00-12:15 and 13:15-17:00
Weekends and Holidays : Closed

Google Map



Tsukuba Campus



Tokyo Campus

Inquiries on Research Field and Early Completion Program Selection Requirements

Degree Programs	Contact Information	Hours
Degree Programs in Business Sciences	Academic Service Office for the Business Sciences ☎ 03-3942-6918 ✉ business-kyomu1@un.tsukuba.ac.jp	Monday: 10:00-18:30 Tuesday-Friday: 10:00-21:10 Saturday: 10:00-20:00 Sunday and Holidays: Closed
Degree Programs in Pure and Applied Sciences	Academic Service Office for the Pure and Applied Sciences Area ☎ 029-853-4443 ✉ jimu-pas@un.tsukuba.ac.jp	Weekdays: 9:00-12:15 and 13:15-17:00 Weekends and Holidays: Closed
Degree Programs in Systems and Information Engineering	Academic Service Office for the Systems and Information Engineering Area ☎ 029-853-4979 ✉ sysinfo.admission@un.tsukuba.ac.jp	
Degree Programs in Life and Earth Sciences	Academic Service Office for the Life and Environmental Sciences Area ☎ 029-853-4570 ✉ seimeiin@un.tsukuba.ac.jp	
Doctoral Program in Life Science Innovation	Tsukuba Life Science Innovation Office ☎ 029-853-3998 ✉ life-innov@un.tsukuba.ac.jp	

■ Published by
Division of Educational Reform Support
Department of Educational Promotion
■ Address
1-1-1, Tennodai, Tsukuba, Ibaraki, 305-8577, Japan
■ Date of Issue
May 2025

Early Completion Program Selection Requirements

-Number of papers and oral presentations required to apply for this program-

(As of April 2025)

Degree Programs in Business Sciences

Doctoral Program	Number of peer-reviewed academic papers	Number of oral presentations
Law	At least 2 peer-reviewed academic papers equivalent. However, one of the editions should be about over 100,000 letters.	
Business Administration	At least 2 peer-reviewed papers published in academic journals.	

Degree Programs in Pure and Applied Sciences

Doctoral Program	Number of peer-reviewed academic papers	Number of oral presentations
Mathematics	At least 2 papers. (The manuscript must have been published or accepted for publication in an international journal. One of the papers must be a single author.)	The number of oral presentations does not matter.
Physics	At least 3 papers. (Already published or accepted for publication in an international journal.)	The number of oral presentations does not matter.
Chemistry	At least 3 papers. (The paper must have been published or accepted for publication in an international journal. Must be first author or contributing author)	The number of oral presentations does not matter.
Engineering Sciences -Subprogram in Applied Physics	At least 3 papers. (The manuscript must have been published or accepted for publication in an international journal. Must be first author.)	The number of oral presentations does not matter.
Engineering Sciences - Subprogram in Materials Science	At least 3 papers. (The manuscript must have been published or accepted for publication in an international journal. Must be first author.)	The number of oral presentations does not matter.
Engineering Sciences - Subprogram in Materials Science and Engineering	At least 3 papers. (The manuscript must have been published or accepted for publication in an international journal. Must be first author.)	The number of oral presentations does not matter.

Degree Programs in Systems and Information Engineering

Doctoral Program	Number of peer-reviewed academic papers	Number of oral presentations
Policy and Planning Sciences	At least 2 peer-reviewed academic papers. (First authorship is preferred.)	The number of oral presentations does not matter.
Risk and Resilience Engineering	At least 1 peer-reviewed academic paper. (First authorship is preferred.)	At least 2 oral presentation materials. (Refereed international conference papers are preferred.)
Computer Science	At least 1 peer-reviewed academic paper. (You must be the primary author. Peer-reviewed international conference papers may be accepted.)	The number of oral presentations does not matter.
Intelligent and Mechanical Interaction Systems	At least 2 peer-reviewed academic papers. (One of the papers may be accepted as a peer-reviewed international conference paper. As a rule, you must be the first author.)	At least 1 oral presentation at an international conference. (As a rule, you must be the first author and the oral/poster presenter of the paper.)
Engineering Mechanics and Energy	At least 2 peer-reviewed academic papers. (First authorship is preferred.)	At least 2 oral presentation materials.

Degree Programs in Life and Earth Sciences

Doctoral Program	Number of peer-reviewed academic papers	Number of oral presentations
Biology	At least 2 original papers by the first author. (Material that has been published or accepted for publication in a peer-reviewed international journal.)	
Agricultural Sciences	At least 2 papers in English or 4 papers in Japanese, or 1 paper in English and 2 papers in Japanese. All authors must be first authors. (Material that has been published or accepted for publication in a peer-reviewed international journal.)	

Doctoral Program	Number of peer-reviewed academic papers	Number of oral presentations
Life and Agricultural Sciences	At least 2 original papers by the first author. (Material that has been published or accepted for publication in a peer-reviewed international journal.)	
Bioindustrial Sciences	At least 2 papers in English or 4 papers in Japanese, or 1 paper in English and 2 papers in Japanese. All authors must be first authors. (Material that has been published or accepted for publication in a peer-reviewed international journal.)	
Geosciences	At least 2 original papers by the first author. (Material that has been published or accepted for publication in a peer-reviewed international journal.)	
Environmental Studies	At least 2 published, original papers directly related to the dissertation. Must be the first author.	

Doctoral Program in Life Science Innovation

(Cross-disciplinary degree programs in which each course belongs to its own degree program)

Course	Number of peer-reviewed academic papers	Number of oral presentations
Bioinformatics (Degree Programs in Systems and Information Engineering)	At least 2 peer-reviewed first author English language papers directly related to the dissertation. (One of the two papers may be peer-reviewed proceedings. However, it must be independent of the other one.)	At least 1 presentation at an international conference as the first presenter. (Regardless of whether it is a poster presentation or oral presentation.)
Food Innovation (Degree Programs in Life and Earth Sciences)	At least 2 peer-reviewed first author English language papers directly related to the dissertation.	At least 1 presentation at an international conference as the first presenter. (Regardless of whether it is a poster presentation or oral presentation.)
Environmental Management (Degree Programs in Life and Earth Sciences)	At least 2 peer-reviewed first author English language papers directly related to the dissertation.	At least 1 presentation at an international conference as the first presenter. (Regardless of whether it is a poster presentation or oral presentation.)

Course	Number of peer-reviewed academic papers	Number of oral presentations
Biomolecular Engineering (Degree Programs in Life and Earth Sciences)	At least 2 peer-reviewed first author English language papers directly related to the dissertation.	At least 1 presentation at an international conference as the first presenter. (Regardless of whether it is a poster presentation or oral presentation.)
Disease Mechanism (Degree Programs in Comprehensive Human Sciences)	At least 2 peer-reviewed first author English language papers directly related to the dissertation.	At least 1 presentation at an international conference as the first presenter. (Regardless of whether it is a poster presentation or oral presentation.)
Drug Discovery (Degree Programs in Comprehensive Human Sciences)	At least 2 peer-reviewed first author English language papers directly related to the dissertation.	At least 1 presentation at an international conference as the first presenter. (Regardless of whether it is a poster presentation or oral presentation.)

How to Obtain the Application Guidelines

You can download it from the following website.

Please note that we cannot respond to requests made by mail, telephone or Email.

Tsukuba Campus

Degree Programs in Pure and Applied Sciences

Degree Programs in Systems and Information Engineering

Degree Programs in Life and Earth Sciences

Doctoral Program in Life Science Innovation

▼ Application Guidelines

Graduate Admissions Website: <https://eng.ap-graduate.tsukuba.ac.jp/>

▼ Inquiries on Entrance Examination for Graduate Admissions

Division of Admission, Department of Educational Promotion

Address	1-1-1 Tennodai, Tsukuba, Ibaraki 305-8577 Japan
Tel	029-853-2230, 2231
Email	dai.daigakuinka@un.tsukuba.ac.jp Note: Please include an email title, your name, contact information, the degree program of your choice, and the nature of your inquiry when submitting your inquiry.
Hours	Weekdays: 9:00-12:15 and 13:15-17:00 Weekends and Holidays: Closed

Tokyo Campus

Degree Programs in Business Sciences

▼ Application Guidelines

Tokyo Campus Website: <https://www.office.otsuka.tsukuba.ac.jp/>

▼ Inquiries on Entrance Examination for Graduate Admissions of the Degree Programs in Business Sciences

Academic Service Office for the Business Sciences

Address	3-29-1 Otsuka, Bunkyo-ku, Tokyo 112-0012 Japan
Tel	03-3942-6918
Hours	Monday 10:00-18:30 Tuesday-Friday 10:00-21:10 Saturday 10:00-20:00 Sunday and Holidays: Closed